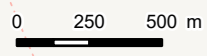
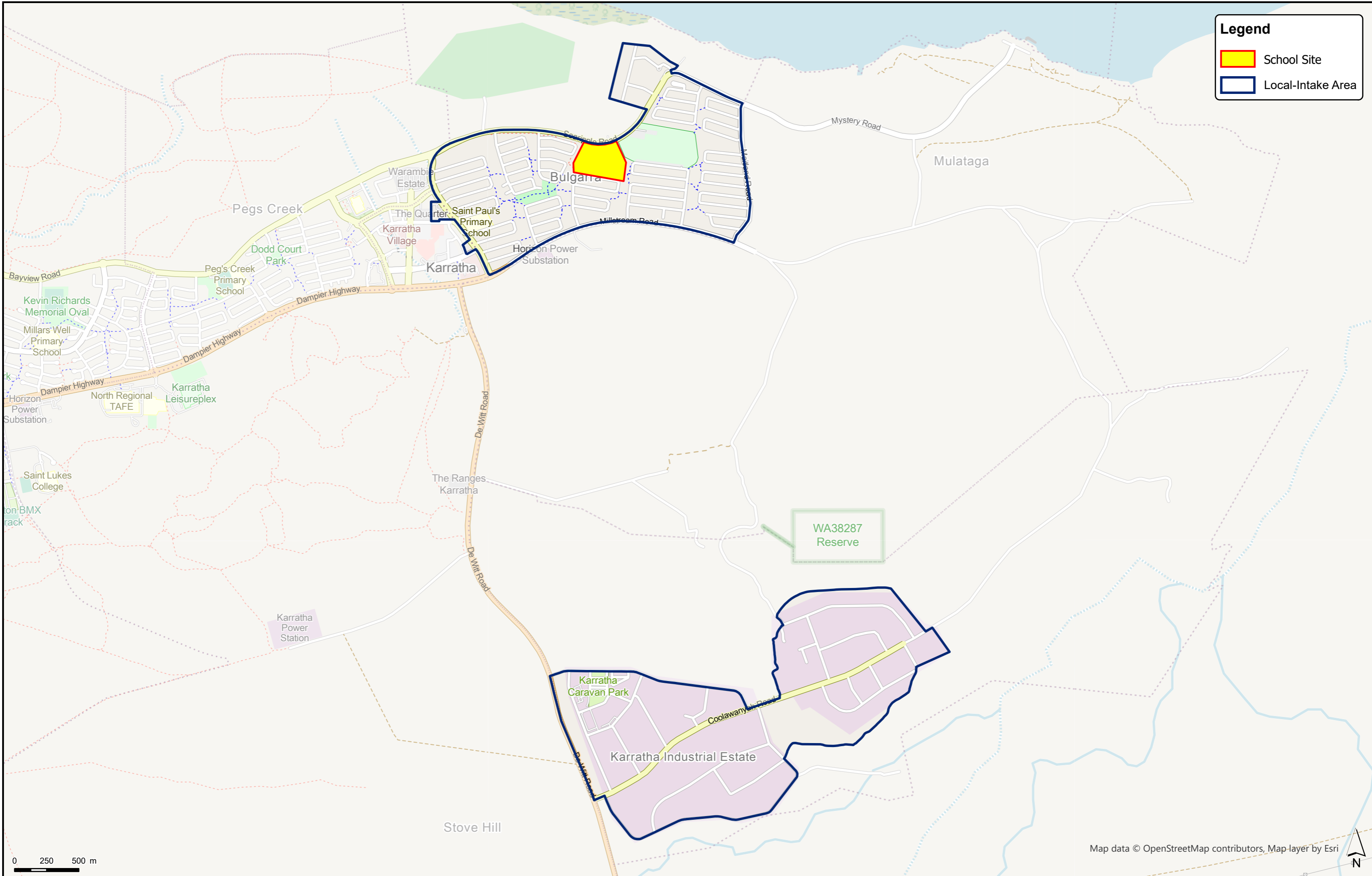


Legend

- School Site
- Local-Intake Area



Map data © OpenStreetMap contributors, Map-layer by Esri

This map is based on a written description of the local-intake area (LIA) for the school as published in the WA Government Gazette. Although the map closely represents the LIA description, for some houses near the boundary (especially on street corners), it may be necessary to refer to the written description. The street address of a residence is used to determine whether that dwelling is inside a particular LIA. The LIA description can be found in the School Profile System on the Department of Education website. While local-intake areas for most schools do not change from year to year, changes are made to local-intake areas as required. Such changes are published in the "WA Government Gazette" (usually in a December issue) and subsequently this map will be updated. For any enquiries contact Department of Education.

KARRATHA PRIMARY SCHOOL
 SCHOOL CODE - 5535
 Local-Intake Area boundary December 2010



Version 1.3
 Map created 03/03/2021 by Asset Planning and Services Branch, Department of Education WA
 S:\7352-Asset Services Apps\GIS\DOE GISMAPS\SchoolMaps\PRIMARY_SCHOOLS\KARRATHA PRIMARY SCHOOL v1.3.aprx